
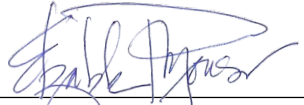

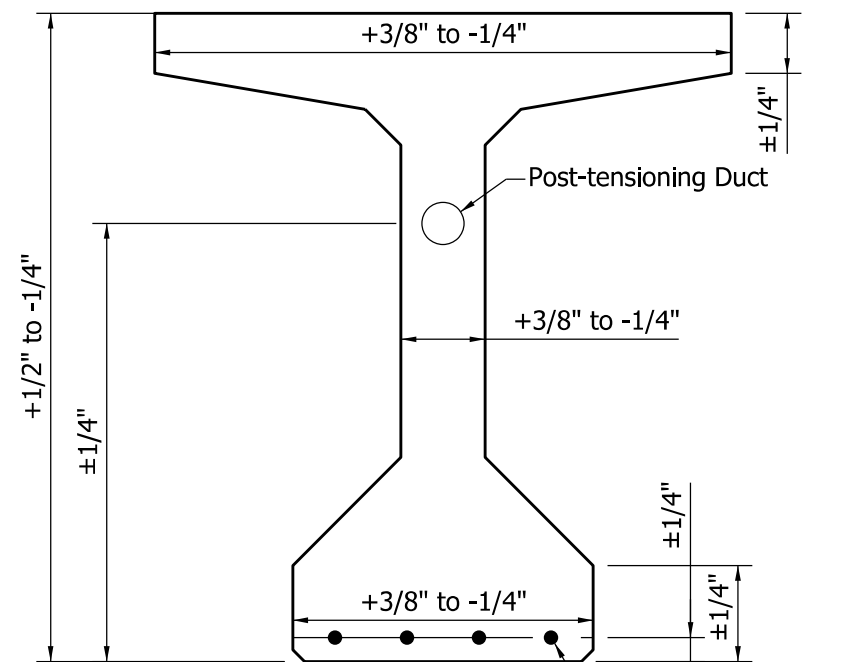
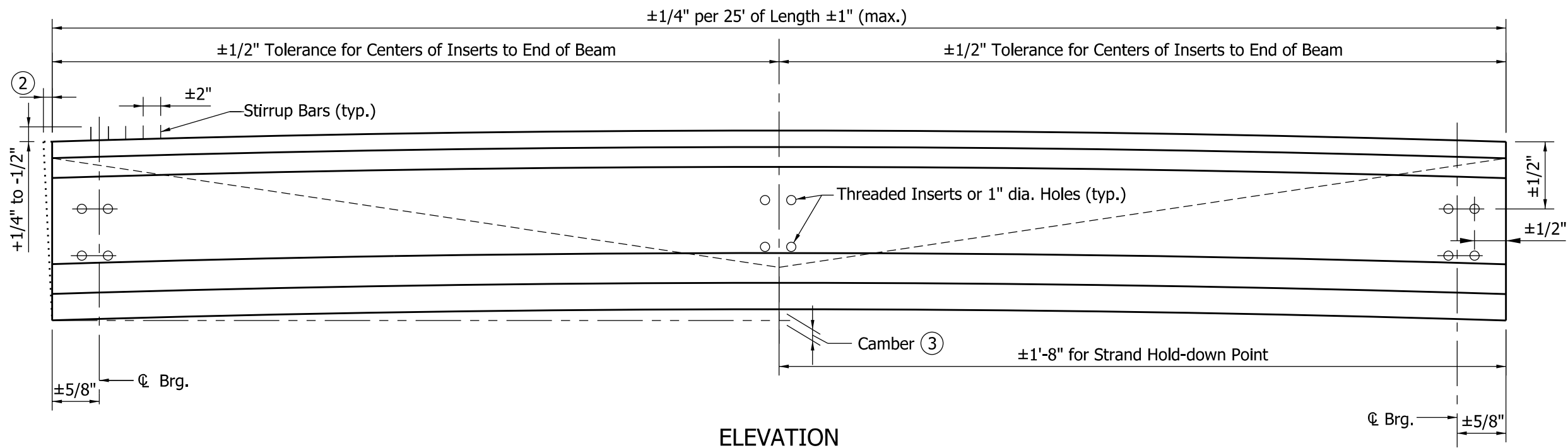
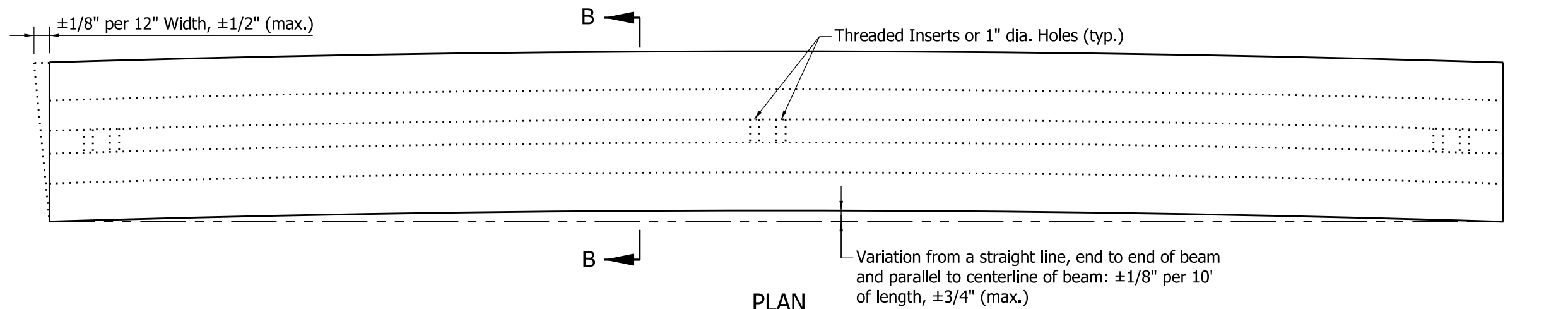


INDEX	
SHEET NO.	SUBJECT
1	Fabrication Tolerances Index and General Notes
2	Fabrication Tolerances Prestressed Box Beam
3	Fabrication Tolerances Prestressed I-Beam and Bulb-Tee Beam
4	Fabrication Tolerances Prestressed NEXT Beam

GENERAL NOTES:

1. Tolerances shown are maximum permissible variations from the dimensions shown on the shop drawings. Tolerances shall not be considered cumulative. Longitudinal tolerances are based on design length. Casting length shall be adjusted to compensate for shrinkage and plastic flow.
2. Mild reinforcing bar concrete cover tolerance shall be +3/8 in. to -1/8 in.
3. Vertical camber shall be checked within 72 hours of transfer of prestressing force. Camber shall be measured within three days prior to shipping and any exceedances shall be reported to the Engineer prior to shipping.
4. Tolerance in length of beam shall be checked after the final curing phase and within three days prior to shipping.
5. Tolerance in horizontal alignment shall be checked immediately after de-tensioning is complete, prior to removal from bed.
6. At concrete bearing area, deviation from plane surface when tested in all directions of the plane surface with a steel straightedge shall not be more than $\pm 1/8$ in.
7. Local smoothness of any surface shall not deviate from a 10 ft straightedge by more than 1/8 in.

INDIANA DEPARTMENT OF TRANSPORTATION	
FABRICATION TOLERANCES INDEX AND GENERAL NOTES	
SEPTEMBER 2025	
STANDARD DRAWING NO. E 707-BPBF-01	
	<div> DESIGN STANDARDS ENGINEER 01/22/2025 DATE</div> <div> CHIEF ENGINEER 03/20/2025 DATE</div>



SECTION B-B

(Bulb-Tee Section Shown, I-Beam Similar)

NOTES:

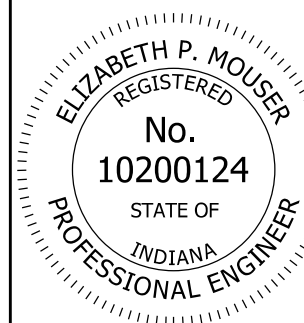
- Center of gravity of draped strand group at the end of the beam shall not be more than $\pm 1/2$ in.
- ② Maximum variation from specified elevation end squareness or skew shall be $\pm 3/16$ in. per 12 in. of beam height, 1 in. max.
- ③ Camber variation from camber shown on the shop drawings shall be $\pm 1/2$ in. maximum for beam length of 80 ft or less, ± 1 in. maximum for beam length greater than 80 ft.

INDIANA DEPARTMENT OF TRANSPORTATION

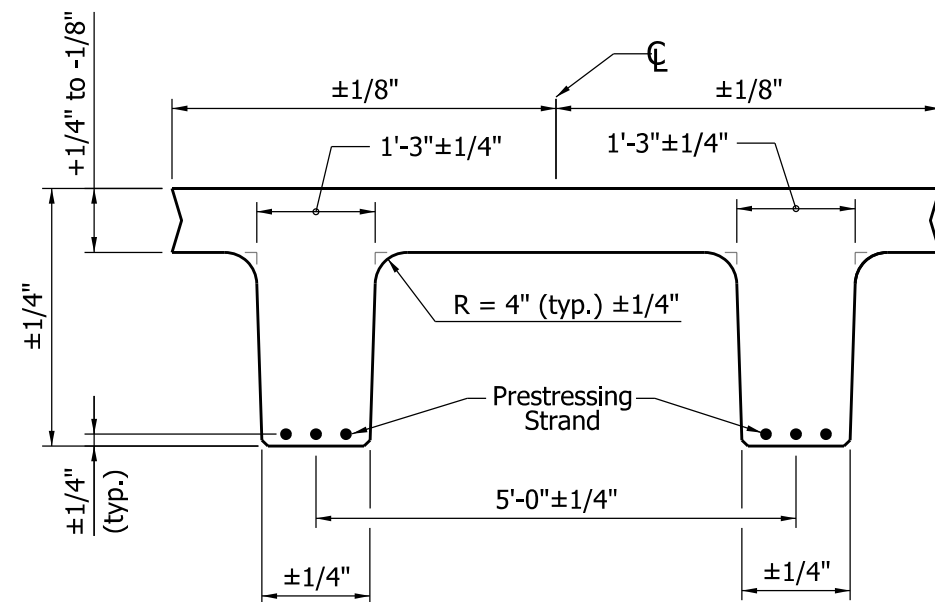
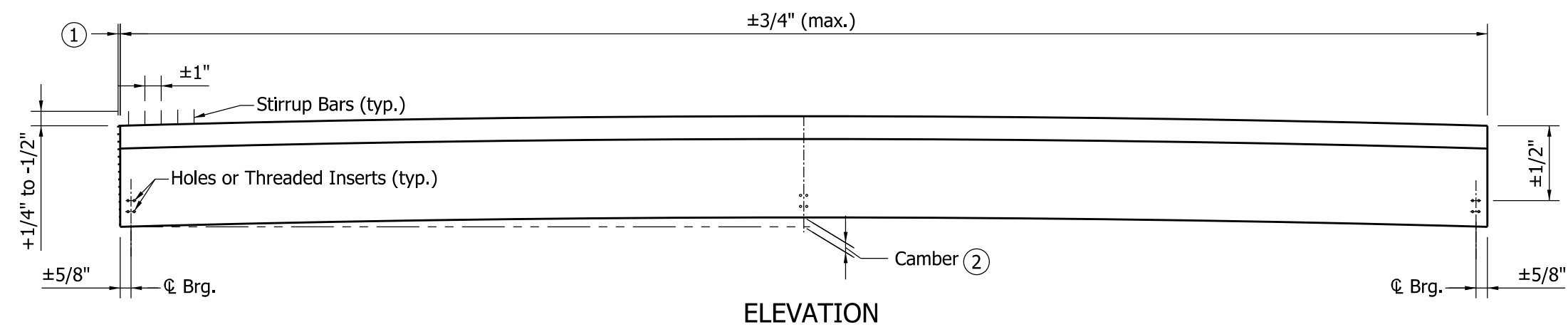
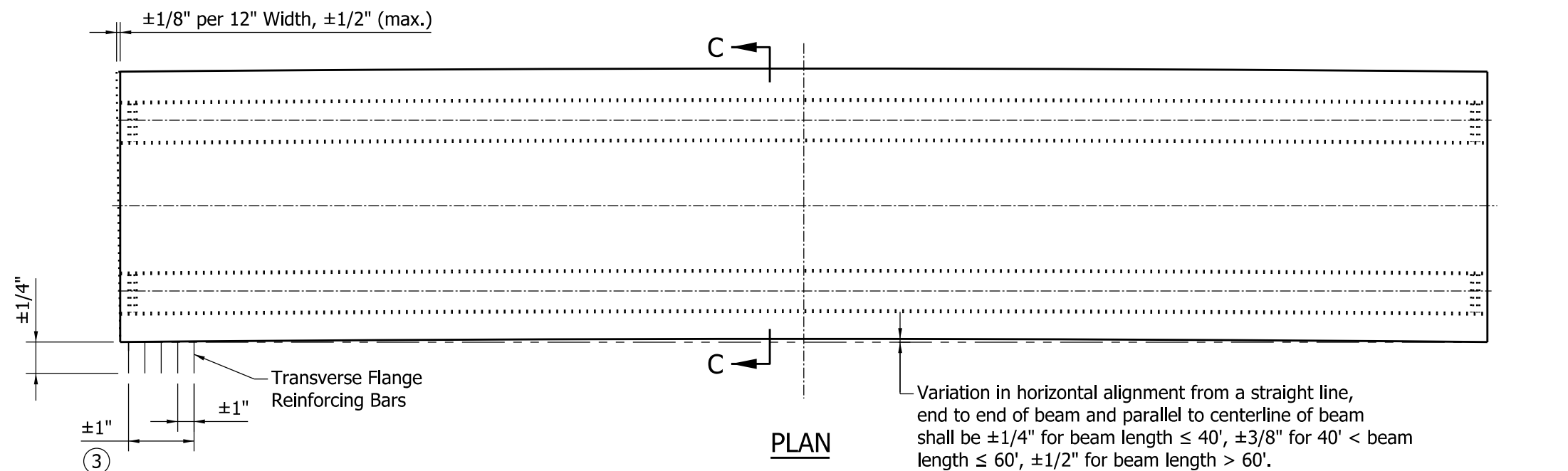
FABRICATION TOLERANCES
PRESTRESSED I-BEAM AND BULB-TEE BEAM

SEPTEMBER 2025

STANDARD DRAWING NO. E 707-BPBF-03



	01/22/2025
DESIGN STANDARDS ENGINEER	DATE
	03/20/2025
CHIEF ENGINEER	DATE



SECTION C-C

NOTES:

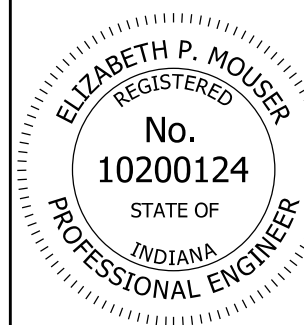
- ① Maximum variation from specified elevation end squareness or skew shall be $\pm 1/8$ in. per 12 in. of beam height, $1/2$ in. max.
- ② Camber variation from camber shown on the shop drawings shall be $\pm 1/8$ in. per 10 ft length with $\pm 1/2$ in. maximum.
- ③ Spacing tolerance for transverse flange reinforcing bars that project beyond the edge of the top flange shall be measured relative to plan location of each bar and shall not be solely based on as-built location of the adjacent bars.

INDIANA DEPARTMENT OF TRANSPORTATION

FABRICATION TOLERANCES
PRESTRESSED NEXT BEAM

SEPTEMBER 2025

STANDARD DRAWING NO. E 707-BPBF-04



Elizabeth P. Mouser
DESIGN STANDARDS ENGINEER 01/22/2025
DATE

[Signature]
CHIEF ENGINEER 03/20/2025
DATE